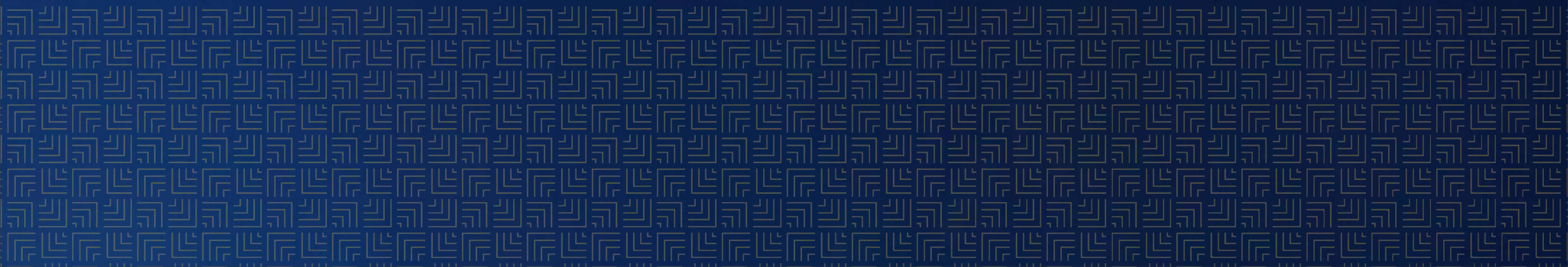




MILLENNIUM  
AMARA

2 & 3 BHK Lifestyle Abodes, MAMURDI



## BUILT ON TRUST. BUILT TO LAST!

With a legacy spanning over 13 years in the real estate industry, Millennium Developers stands as a beacon of unwavering commitment and expertise. Our journey has been defined by a relentless passion for our craft. Our exceptional team leads with vision and a determination that sets us apart.

Over the years, we have completed 16+ projects, bringing joy and satisfaction to over 2000 families. We understand that it's the meticulous attention to detail that truly makes the difference. Our proven track record of success attests to this dedication and in all these years we have developed and delivered over 2 Million Square Feet.

At Millennium Developers, we believe in building not only exceptional properties but also strong relationships. Our mission is to transform spaces, empower businesses, and enhance communities. Our work reflects a dedication to quality and precision that knows no bounds, and we are just getting started.



- We build with a commitment to lasting quality.
- Our architectural designs are not just buildings; they are works of art.
- Meticulous Attention to Detail
- From custom finishes to thoughtfully integrated fixtures.
- Rigorous quality control processes to ensure your home meets the highest standards.
- Beautiful Outdoor Spaces and equally appealing indoor aesthetics to make you feel home.
- Our projects offer a variety of amenities that encourage interaction, socialization, and a strong sense of community
- On-Time/Early Possession
- Excellent CRM support and helpdesk

13+

YEARS IN  
REAL ESTATE

16+

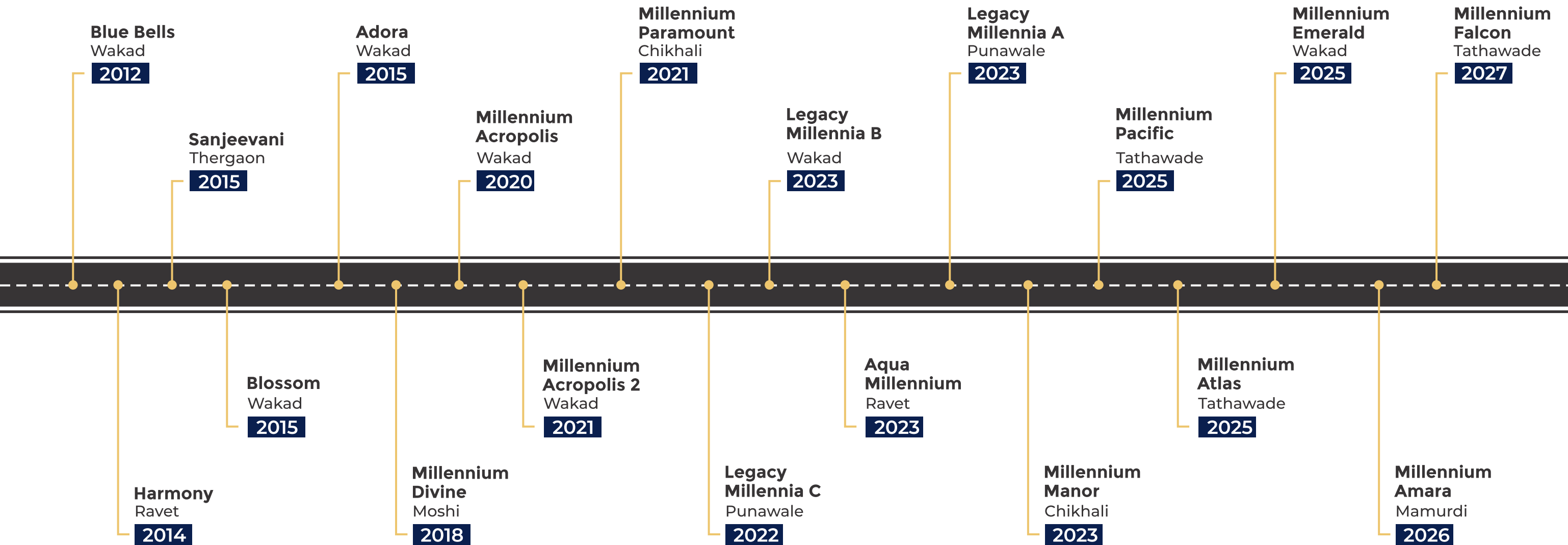
PROJECTS  
COMPLETED

2M+

MILLION SQ.FT.  
DELIVERED

2000+

HAPPY  
FAMILIES





## ONGOING PROJECTS

---

Millennium Emerald, Wakad



## UPCOMING PROJECT

---

Millennium Falcon, Tathawade



Millennium Pacific, Tathawade



QUALITY CONSTRUCTION,  
TIMELESS DEDICATION!



# MAMURDI

■ Surrounded with Natural Greens

■ Strategically located near the Mumbai-Pune Expressway

■ Excellent Connectivity to PCMC, Hinjewadi IT Park, Baner-Balewadi, Chakan and Talegaon

■ Intersection of 3 major routes - Old NH-4 Highway, Katraj-Dehu Road and Mumbai-Pune Expressway.

■ Close proximity to Top Educational Institutions and all lifestyle conveniences

■ Futuristic Location with Assured Appreciation









# LOCATION MAP



Express way	01 min	Chinchwad	15 min	Bhosari	22 min
MCA Cricket Stadium	02 min	Indira College	15 min	Talegaon	25 min
Sentosa Resort	02 min	Hinjewadi Flyover	15 min	Shivaji Nagar	25 min
Punavale Corner	08 min	Balewadi Stadium	17 min	Pune Airport	35 min
Railway Station (Dehu)	10 min	Nigadi	18 min	Lonawala	35 min
Railway Station (Akurdi)	12 min	Sus Phata	20 min	Panvel	90 min
Dange Chowk	12 min	Aundh	20 min	Mumbai	120 min
Birla Hospital	15 min	Baner	20 min		











EVERYTHING WE DO  
COMES FROM THE HEART!



# Live Zentastic

---

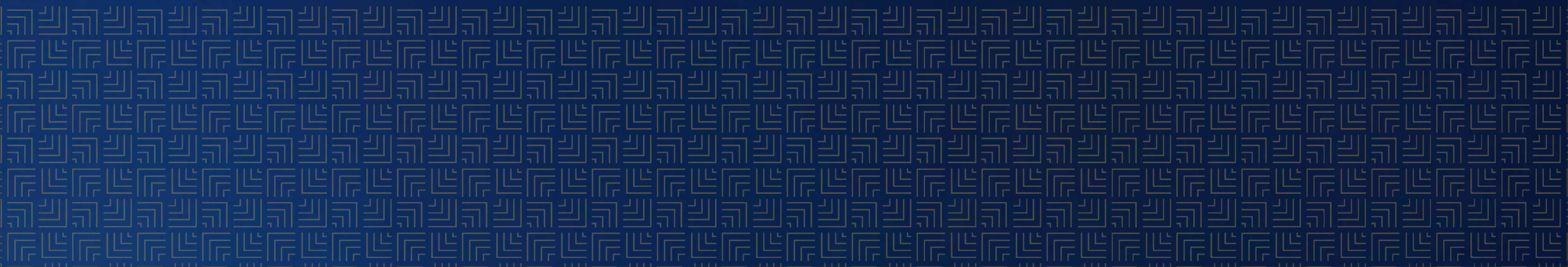
"Live Zentastic" is a distinctive living experience that emphasizes tranquility and serenity. Zentastic Living is based on the idea that Millennium Amara provides residents with a unique opportunity to live in a peaceful and harmonious environment, far removed from the hectic city life.

By embracing the term "Zentastic," we want to evoke a sense of peacefulness, mindfulness, and well-being in everyday living, making it not just a place to reside but a holistic lifestyle choice.

Project by



Strategic Partner







SKETCHERS

MENS WEAR

LEVIS

US LO

SPARKS

MENS WEAR

HY FASHION





## EMBARK ON YOUR ZENTASTIC JOURNEY

---

Prepare for an extraordinary journey into the world of "Zentastic Living." Located in Pune, our project offers a lifestyle where tranquility and mindfulness reign supreme. "Live Zentastically" is more than a tagline; it's an invitation to elevate every moment into a masterpiece.

From the moment you enter this sanctuary, you'll discover a place where peace and well-being are everyday realities. Join us on this transformative journey and redefine your life with a unique living experience.





Image for representation purpose only.

## A ZEN TAPESTRY OF LUXURIOUS AMENITIES

---

Immerse in luxury and tranquility with meticulously crafted amenities. Our project weaves a tapestry of opulence resonating with "Zentastic Living." Lush green spaces invite relaxation, while yoga pavilions inspire mindfulness.

In this community, every moment is a masterpiece. Experience the blend of opulence and serenity, where comfort and well-being intertwine for an exceptional living experience.



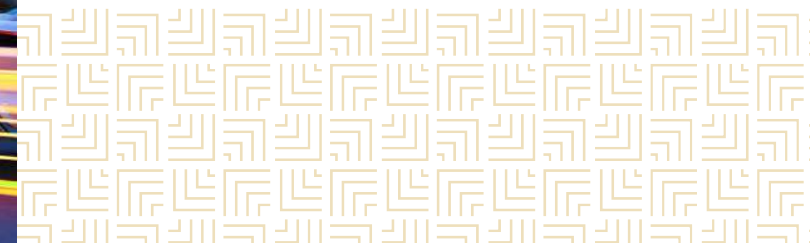


## PROJECT HIGHLIGHTS

---

### **THE ZENTASTIC LIFESTYLE!**

- Thoughtful Amenities for a Zentastic Living Experience
- Every Home has 2 Balconies;  
King size Balcony for 3 BHK
- Unobstructed Scenic View from every Home
- Commercial High Street
- Smart & Spacious Layouts
- 4 Flats per Floor
- Excellent Construction Quality
- No MHADA
- Multiple Configuration Options
- Excellent Connectivity to Expressway, Pune-Mumbai Highway, Hinjewadi IT Park





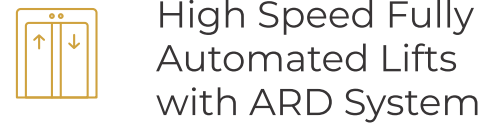
# PROJECT LAYOUT

- 1 ENTRY/EXIT
- 2 CHILDREN'S PLAY ZONE
- 3 SWIMMING POOL + FEATURE WALL
- 4 KID'S POOL
- 5 POOL DECK + CHANGING ROOMS
- 6 SEATING + TREE PIT
- 7 PARTY LAWN
- 8 SEATING PLAZA + PERGOLA
- 9 OUTDOOR FITNESS AREA
- 10 BOUNDARY PLANTATION
- 11 ENTRY TO PODIUM GARDEN
- 12 STEPPING PADS
- 13 FEATURE WALL + OUTDOOR CINEMA SCREEN
- 14 MULTIPURPOSE ZONE (ARTIFICIAL LAWN)
- 15 ACTIVITY DECK / PARTY STAGE
- 16 PEBBLE BED ON DRAIN CHANNEL
- 17 POTTED PLANTS
- 18 PERGOLA WITH CREEPERS





## LIFESTYLE AMENITIES



## ROOFTOP AMENITIES



- Water saving Flush valves & low flow fixtures in toilets for water conservation
- Sewage Treatment Plant
- Elegant Entrance Lobby
- Energy Saving Led Lighting for Common areas
- Integrated Fire Fighting System
- Rain Water Harvesting
- Flag hoisting Area
- Security Cabin
- Attractive Entrance Gate
- Common washroom in campus
- Solar PV panels
- Smart Door Bell



















## PREMIUM SPECIFICATIONS

### STRUCTURAL

- Earthquake Resistant RCC Structure
- AAC Block masonry work for external & internal walls
- External Sand Faced Cement Plaster & Texture Coat
- Gypsum finish plaster with Acrylic emulsion paint

### DOORS & WINDOWS

- High Quality Both Side Laminated wooden doors with edge banding finish on edges and perimeter seal on door frame.
- Toilet door - High Quality Both Side Laminated wooden doors with edge banding finish on edges
- Balcony Doors & Windows: 3 track aluminium sliding doors & windows with mosquito nets

### FLOORING

- 800\*1600 High quality vitrified floor tiles for living and bedrooms.
- Anti - skid Vitrified Tiles in Balconies and toilets.
- Ceramic wall tiles for toilets and kitchen.
- Granite Frames for Toilets & Windows

### BATHROOMS

- Ceramic wall tiles for toilets
- CP Fittings of Jaguar
- Sanitary fittings of Hindware
- Concealed plumbing

### KITCHEN

- Vitrified Slab for Kitchen Platform with S.S. Sink
- Ceramic wall tiles for kitchen
- Provision of electric connection for chimney
- Provision of electric & water connection for Water Purifier
- Provision of electric & water connection for Washing Machine

### ELECTRIFICATION

- Concealed Fire Resistant Copper Wiring of Polycab
- Modular Switches of Precision
- Provision for AC points in all bedrooms and Living Room
- Provision for Ample Light Points
- Provision for TV point & Telephone Point
- Electric points for Inverter & Geyser
- Provision for exhaust fan in Bathrooms & Kitchen

### PAINTS

- **Internal Walls:** Gypsum Finish Plaster with Acrylic Emulsion Paint
- **External Walls:** Texture Finish All Weather Coat External Paint



## 2 BHK UNIT PLAN

---



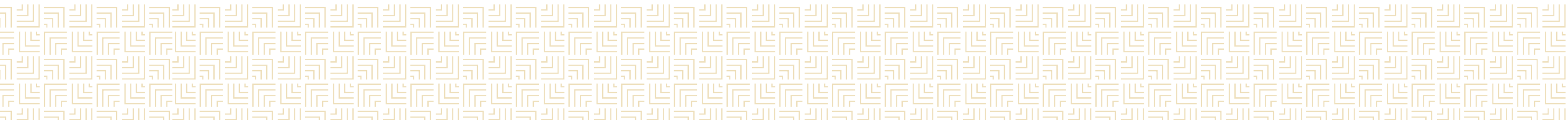
Artist's Impression.

## 3 BHK UNIT PLAN

---



Artist's Impression.





# TYPICAL FLOOR PLAN - A WING



SERIES NO.		FLAT NO.		TYPE	CARPET AREA STATEMENT IN SQ.FT.& SQ.MT.							
SQ.FT.	SQ.MT.	SQ.FT.	SQ.MT.		ENCN.BAL.	OPEN BALCONY	SIT-OUT	TOTAL	SQ.FT.	SQ.MT.	SQ.FT.	SQ.MT.
1	201,301,401,501,601,801,901,1001,1101,1301	833	77.39	3 BHK	57	5.30	109	10.13	54	5.02	1053	97.83
2	202,302,402,502,602,802,902,1002,1102,1302	833	77.39	3 BHK	57	5.30	109	10.13	54	5.02	1053	97.83
3	203,303,403,503,603,803,903,1003,1103,1303	665	61.78	2 BHK	0	0.00	132	12.26	0	0.00	797	74.04
4	204,304,404,504,604,804,904,1004,1104,1304	665	61.78	2 BHK	0	0.00	132	12.26	0	0.00	797	74.04



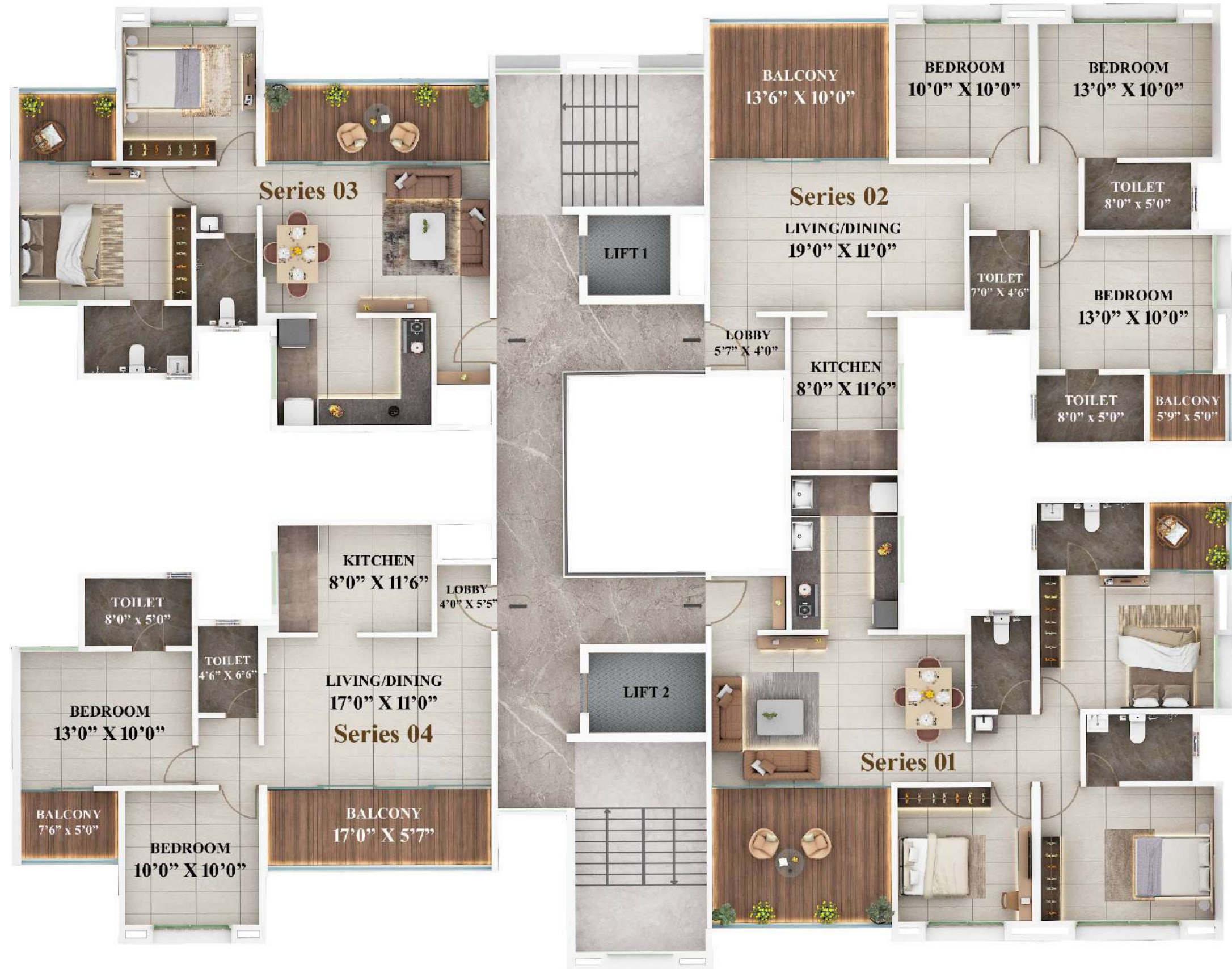
# REFUGE FLOOR PLAN - A WING



CARPET AREA STATEMENT			IN SQ.FT. & SQ.MT.									
SERIES NO.	FLAT NO.	TYPE	CARPET		ENCN. BAL.		OPEN BALCONY		SIT-OUT		TOTAL	
			SQ.FT.	SQ.MT.	SQ.FT.	SQ.MT.	SQ.FT.	SQ.MT.	SQ.FT.	SQ.MT.	SQ.FT.	SQ.MT.
1	701,1201	3 BHK	833	77.39	57	5.30	109	10.13	54	5.02	1053	97.83
2	702,1202	3 BHK	833	77.39	57	5.30	109	10.13	54	5.02	1053	97.83
3	703,1203	2 BHK	665	61.78	0	0.00	132	12.26	0	0.00	797	74.04
4	704,1204	2 BHK	662	61.50	0	0.00	106	9.85	0	0.00	768	71.35



# TYPICAL FLOOR PLAN - B WING



CARPET AREA STATEMENT			IN SQ.FT.& SQ.MT.									
SERIES NO.	FLAT NO.	TYPE	CARPET		ENCN.BAL.		OPEN BALCONY		SIT-OUT		TOTAL	
			SQ.FT.	SQ.MT.	SQ.FT.	SQ.MT.	SQ.FT.	SQ.MT.	SQ.FT.	SQ.MT.	SQ.FT.	SQ.MT.
1	201,301,401,501,601,801,901,1001,1101,1301	3 BHK	833	77.39	57	5.30	109	10.13	54	5.02	1053	97.83
2	202,302,402,502,602,802,902,1002,1102,1302	3 BHK	833	77.39	57	5.30	109	10.13	54	5.02	1053	97.83
3	203,303,403,503,603,803,903,1003,1103,1303	2 BHK	665	61.78	0	0.00	132	12.26	0	0.00	797	74.04
4	204,304,404,504,604,804,904,1004,1104,1304	2 BHK	665	61.78	0	0.00	132	12.26	0	0.00	797	74.04



# REFUGE FLOOR PLAN - B WING



CARPET AREA STATEMENT												
SERIES NO.	FLAT NO.	TYPE	IN SQ.FT.& SQ.MT.									
			CARPET		ENCN.BAL.		OPEN BALCONY		SIT-OUT		TOTAL	
			SQ.FT.	SQ.MT.	SQ.FT.	SQ.MT.	SQ.FT.	SQ.MT.	SQ.FT.	SQ.MT.	SQ.FT.	SQ.MT.
1	701,1201	3 BHK	833	77.39	57	5.30	109	10.13	54	5.02	1053	97.83
2	702,1202	3 BHK	833	77.39	57	5.30	109	10.13	54	5.02	1053	97.83
3	703,1203	2 BHK	665	61.78	0	0.00	132	12.26	0	0.00	797	74.04
4	704,1204	2 BHK	662	61.50	0	0.00	106	9.85	0	0.00	768	71.35



www.millenniumdv.com

Project by



Strategic Partner



Scan for Location



90 90 37 23 23



Millennium Amara, Sr. No.- 5/1B, Mamurdi, Pune - 412101.

**Disclaimer:** This perspective image may not be to scale or may not represent actual facade/elevation. The details of windows, paints, elevation features, landscaping, ground development, trees or any other details in this perspective are an artist's impression and could be different to actual. The viewer affirms that he/she has not taken his/her decision of purchase/booking by viewing this perspective. This brochure is not a legal offering. The developers reserve absolute rights to change/cancel any plans, layouts, no. of floors and/or specifications at their discretion. Images are for representational purposes only. All Room Dimensions Are Inclusive of the Enclosed Balcony. Internal Room Dimensions Are from Un-finished Wall to Wall, in Line with Sanction Plans. The Area in Sq. Ft Has Been Mentioned Just for the Convenience of Customers for Better Understanding. Arrangement of Furniture Is Just Shown for Purpose of Layout and Not Part of Offer/Sale. The Dimensions given in Feet and Inches Are round to Nearest Precision

