



SAI PEARL

3 BHK PRECIOUS EDITION HOMES

PIMPLE SAUDAGAR

Live The Absolute Life



SSD Sai Pearl Announces The Launch Of Its Two New Towers M & N, in Pimple Saudagar, Pune By SSD Group.

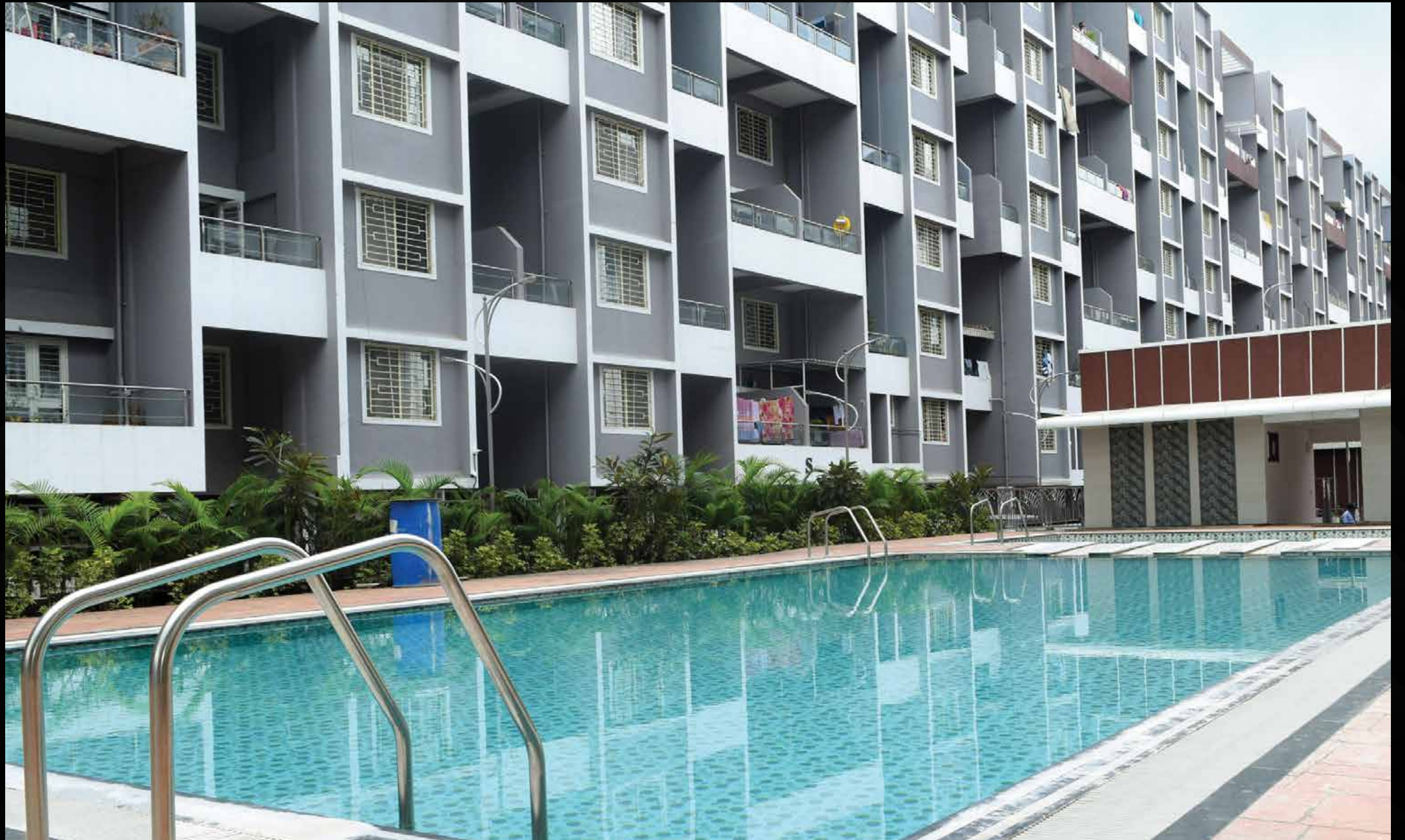
Sai Pearl Is A Masterpiece Of Unmatched Opulence In The City Of Pune, Located In The Heart Of The City, Pimple Saudagar.

The Project Offers 3 BHK Apartment With Perfect Combination Of Contemporary Architecture And Features To Provide Comfortable Living. With 20+ Amenities You Can Stay Active And Have Quality Time Without Even Leaving The Campus.



BUILDING LAYOUT









ABSOLUTE HAPPY TIMES

At Sai Pearl we give you and your family a luxurious living experience that goes beyond the carpet area. The pleasure is not confined to your house wall but outside as well, we provide you with contemporary, ample, and top-of-the-line amenities that make your living truly pleasurable.

Swimming pool | Kids Pool | Changing Room | Club house-1 | Club house-2
Garden and Kid's play area | Multipurpose Play court | Temple | Meditation Area | Gazebo |
Jogging Track | Senior Citizen Sit-out | Outdoor Fitness | Party Lawn |
A.C. Fitness Centre with Indoor Games

SPECIAL FEATURES

- Elegant Entrance Gate • Designer Entrance Lobby • Automatic Lift
- Spacious Concrete Drive Way • Rain Water Harvesting • Fire Fighting System
- Video Door Phone for Each Flat • Power Backup for Lift and Common Area • Solar Water Heater System



ABSOLUTE QUALITY

STRUCTURE

Earthquake Resistant R.C.C. Frame Structure

KITCHEN

Granite Kitchen Platform with S.S. Sink
Provision for Exhaust Fan & Water Purifier

FLOORING

800mm x 800mm Vitrified Flooring in Entire Flat
Master Bed with Wooden Design Vitrified Tiles
Anti Skid Flooring for Bathrooms and Terraces
All Bathrooms & Kitchen with Designer Glazed
Tiles upto lintel level

PAINTING

Internal Tractor Emulsion paint
External ACE Paint.

BRICK WORK & PLASTER

6" Thickness Brick Work
External Sand Faced & Internal Gypsum Finish Plaster

Doors:

Attractive Door for Main Entrance and Bedrooms.
Granite Door Frame for Bathrooms with PVC Doors.

PLUMBING & SANITARY

Concealed plumbing with Jaguar / Equivalent Fittings.
All Sanitary-ware with Somany / Cera Equivalent Fittings.

ELECTRICAL

Concealed Copper Wiring with Legrand/ Equivalent Fittings.
Cable and Telephone point in Living and Master Bedroom.

WINDOWS

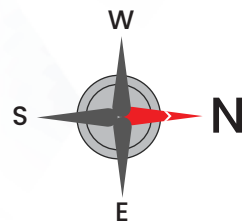
Powder coated 3-track Aluminum Sliding Windows with
Mosquito Mesh & M.S.Grill.

LIVING & DINING

Decorative POP in the Living Room and Dining Area

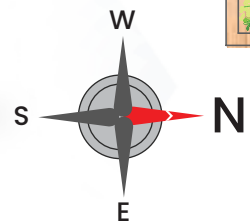
M - WING | ODD FLOOR

FLOOR PLAN



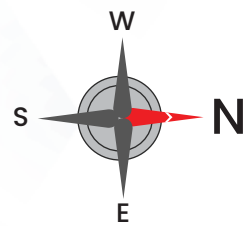
M - WING | EVEN FLOOR

FLOOR PLAN



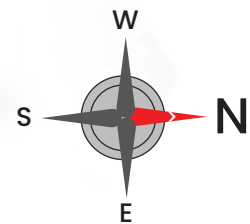
N - WING | ODD FLOOR

FLOOR PLAN



N - WING | EVEN FLOOR

FLOOR PLAN



KEY DISTANCES

SCHOOLS

- SNBP Intl. School
- PK Intl. School
- Vibgyor intl. School
- Challenger Public School
- G.K. Gurukul

MALLS & MULTIPLEX

- Spot 18
- Pentaloons
- D-mart
- Reliance Mart
- Brand Factory

HEALTHCARE

- Lotus Multispecialty Hospital
- Apex Hospital
- Jeevanjyoti Hospital
- Birla Hospital
- Jupiter Hospital

BANKS

- State Bank of India
- Kotak Mahindra Bank
- ICICI Bank
- Axis Bank
- HDFC Bank

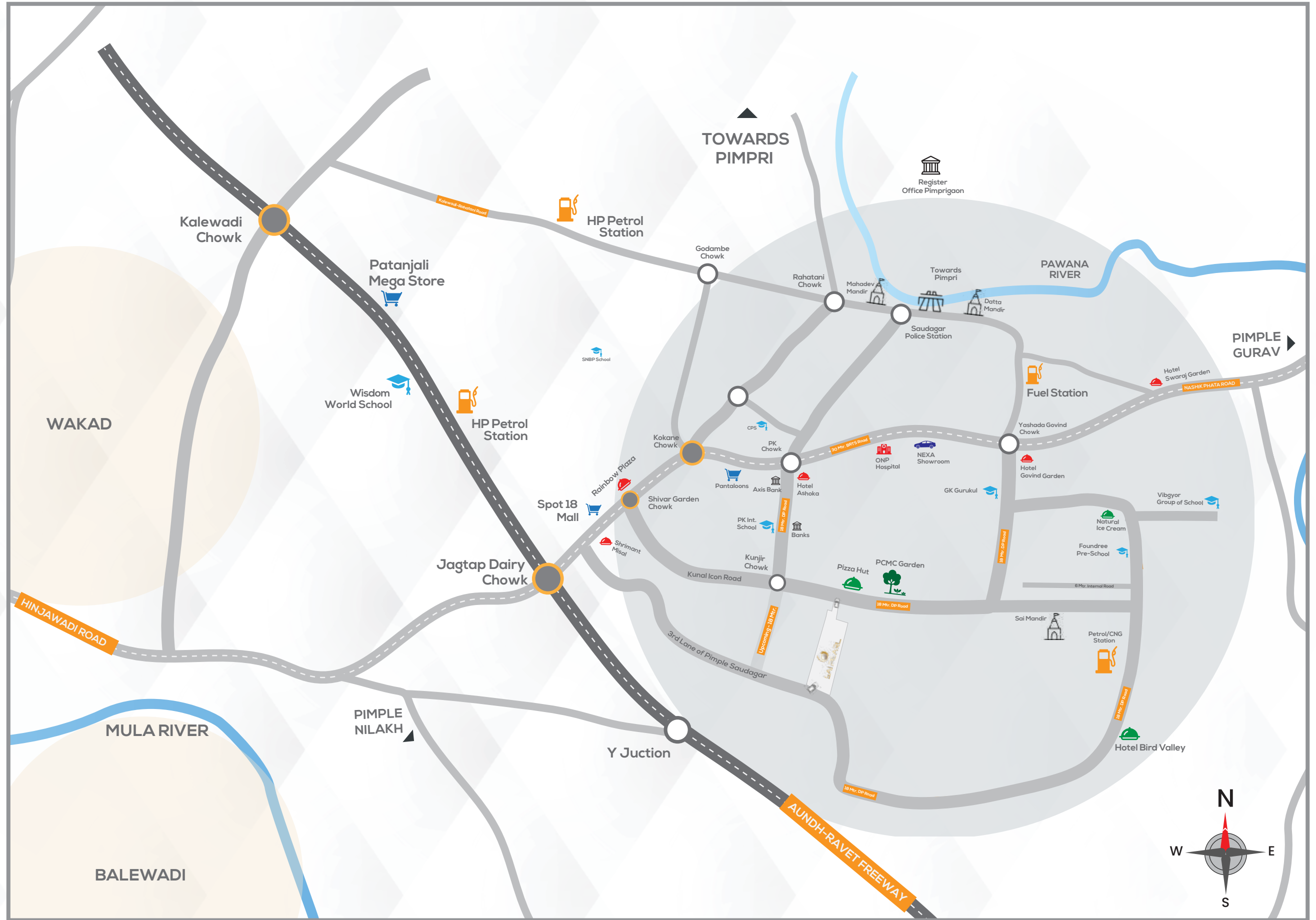
RESTAURANTS

- Govind Garden
- KFC & Domino's
- Kimling Rush
- Shivar Garden
- Bird Valley
- Rangla Punjab



ABSOLUTE CONNECTIVITY

ABSOLUTE CONNECTIVITY



- A PROJECT BY -
S. S. D. PROMOTERS & BUILDERS



- STRATEGIC PARTNER -



RERA NO. P52100051176

Sai Pearl, Opp. Pizza Hut, Kunal Icon Road, Pimple Saudagar, Pune- 411027

Disclaimer : This brochure is purely conceptual and not a legal offering. The developer reserves all the rights to add, delete, alter any detail, specifications, elevation mentioned herein.
All units are unfurnished. furniture wherever shown is for illustrative purpose only. No furniture is to be supplied to the purchaser by the developer unless otherwise mentioned. All images, unless otherwise indicated are used for illustrative purpose only.